

# Surface Protection by Adseal.info

Manufactured by Experts for Professionals

## SOLVENT BASED PRODUCTS

### Block Paving & Imprinted Concrete Sealer [super plus]

A unique blend of resins designed for professionals with ease of installation and long lasting good looks combined with excellent resistance to rain spotting & tyre plucks make this the trade's favourite for over 20 years.

Available in 5, 20 & 25 litre containers. Covers approx. 5 – 10 m2 per litre per coat depending on porosity

- ▶ Single, stain resistant, component
- ▶ 100% UV fade resistance
- ▶ Domestic & Commercial
- ▶ Excellent adhesion
- ▶ Resists tyre plucks & rain spotting
- ▶ Excellent impact & abrasion resistance



### Adseal Concrete & Block Paving Sealer

A unique blend of resins suspended in aromatic hydrocarbons. A professional grade, ready-to-use, high solids, clear concrete sealer. Designed to penetrate and give a lower sheen than Super Plus. Suitable for domestic and commercial. Also an excellent dust suppressor

Available in 5, 20 & 25 litre containers. Covers approx. 5 – 10 m2 per litre per coat depending on porosity

- ▶ Single component
- ▶ 100% UV fade resistance
- ▶ Superb inter-coat adhesion
- ▶ Resists hot tyre plucks
- ▶ Internal or External use
- ▶ Extremely durable



### Stone and Slate Protector

The unique physical and chemical properties of all natural products [Stone, Slate, Travertine, Terracotta, etc., and even clay in clay pavers] need a special seal. For a Matt, colour enhancing finish apply one coat or, for a delicate sheen apply two coats. Vey durable.

Available in 5, 20 & 25 litre containers. Covers approx. 6 – 10 m2 per litre depending on porosity

- ▶ The only sealer specifically designed for natural products
- ▶ 100% UV fade resistance
- ▶ Superb inter-coat adhesion
- ▶ Excellent adhesion & underfoot grip
- ▶ Resists tyre plucks & rain spotting



### Tarmac Restorer [black or red]

As well as re-colour our restorer also helps rebind loosening aggregate, imparts a protective coating, plus an inbuilt UV filter reduces future degradation

Available in 5 & 20 litre containers. Covers approx. 4 – 6 m2 per litre depending on porosity

- ▶ Helps prevent future degradation
- ▶ 100% UV fade resistance
- ▶ Good abrasion & impact resistance
- ▶ Excellent adhesion & underfoot grip
- ▶ Resists tyre plucks & rain spotting
- ▶ Extremely durable



### Heavy Duty Sealer

This is a high strength, hard wearing sealer for most commercial applications. Unlike many commercial products future maintenance is easy as stripping off is not required

Available in 5 & 20 litre containers. Covers approx.. 5 – 8 m2 per litre depending on porosity

- ▶ Hygenic – stains wash away
- ▶ 100% UV fade resistance
- ▶ Good abrasion & impact resistance
- ▶ Excellent adhesion & underfoot grip
- ▶ Extremely durable



### Deck Sealer

A natural finish or can be coloured either with Adseal colour charge or 'decorated' with ORIGINAL SOLID color stain prior to sealing. Hardwearing and long lasting this product is ideal for most internal and external woodwork

Available in 5 & 20 litre containers. Covers approx.. 5 – 8 m2 per litre depending on porosity

- ▶ High tensile strength aids lifespan
- ▶ 100% UV fade resistance
- ▶ Good abrasion & impact resistance
- ▶ Excellent adhesion & underfoot grip
- ▶ Extremely durable



## SOLVENT BASED PRODUCTS continued

### Adseal HiGloss PU Sealer

A revolutionary modified hybrid polyurethane. A ready to use single part products that replicates the strength & durability of the two pack systems but is easier to use and does not carry the same on-site mixing risks. HiGloss PU is ideal for industrial and commercial buildings, garages, chemical plants, warehouses, monolithic flooring or civil, industrial, military and marine applications.

Available in 5 litre containers. Coverage rate is approx.. 3 – 5 m<sup>2</sup> per litre per coat on unsealed and approx.. 5 – 9 m<sup>2</sup> per litre per coat on sealed surfaces

- ▶ Single component
- ▶ Exceptionally durable
- ▶ No on-site mixing
- ▶ Excellent adhesion
- ▶ Versatile applications
- ▶ Internal or External use
- ▶ High gloss finish



### Roof Sealer [plain & coloured]

Exceptionally this product can be used on Rosemary tiles and Slates as well as concrete tiles. Available in clear or in a range of standard roof tile colours – or stain with one of the huge range of colours from the ORIGINAL SOLID stain colour chart at [www.adsealcolours.co.uk](http://www.adsealcolours.co.uk)

Available in 20 litre containers. Covers approx.. 5 – 8 m<sup>2</sup> per litre per coat depending on porosity

- ▶ Protective, strengthens & aids lifespan
- ▶ 100% UV fade resistance
- ▶ High resin only solids for performance
- ▶ Excellent coverage
- ▶ Extremely durable

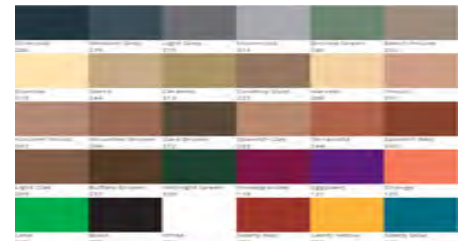


### Coloured Sealer

First choose the appropriate sealers, now choose your colour from our Colour Charge range of high quality pigments and mix in on site to get the depth of colour required.

#### NEW Coloured Stains [non-toxic & low odour]

For a huge range of obscuring colours, why not colour first from our extensive range of SOLID colour stains at [www.adsealcolours.co.uk](http://www.adsealcolours.co.uk) which can then be over-sealed. Also ideal for faux patterns, unique designs, logos, motifs, numbers, etc.



## ECO-FRIENDLY WATER BASED PRODUCTS

### NEW AdSeal™ WB-34 Sealer

WB-34 - a 34% solids, water-based, nano-acrylic urethane sealer ideal for use over concrete colour stains, concrete floors, Block paving, and other new or old concrete and masonry surfaces. Dries quickly and creates a strong, protective, blush resistant low sheen finish. Excellent abrasion and chemical resistance; it also resists hot-tyre, rain, UV, most common household chemicals, oil and grease. Use for both indoor and outdoor applications. Satin finish

Available in 5 litre and 15 litre containers. Recommended two coat application. Coverage rate is approx.. 5 – 10 m<sup>2</sup> per litre per coat on unsealed surfaces and approx.. 10 – 18 m<sup>2</sup> per litre per coat on sealed surfaces

- ▶ Tougher than water-based acrylics
- ▶ Cross-links like a 2-component sealer
- ▶ Strong blush [clouding] resistance
- ▶ Excellent resistance to abrasion, chemicals & hot tyre pick up
- ▶ Non yellowing



### InvisiSeal

A totally invisible, durable, Impregnator that allows the surface to breath. Can be used on most porous surfaces whether horizontal or vertical without changing its colour or texture. Regularly specified for it's long life and 'natural' looks it is suitable for most porous surface.

Available in 5 & 15 litre containers, Covers approx. 8 – 10m<sup>2</sup> per litre

- ▶ Invisible & breathable
- ▶ Virtually no effect on slip resistance
- ▶ Eco-friendly
- ▶ 100% UV and fade resistant
- ▶ Single coat application



# Surface Protection by Adseal.info

## ECO FRIENDLY WATER BASED PRODUCTS continued

### Extreme [damp surface] Sealer

A unique, Environmentally friendly sealer that can also be applied to damp surfaces. Provides a durable barrier to Paving, Stone, Masonry, Rendering, etc. and imparts a medium sheen. Ideal for PIC as sealing can take place on same day as wash off

Available in 5 & 15 litre containers, Covers approx. 8 – 10m<sup>2</sup> per litre

- ▶ Can be used on damp surfaces
- ▶ Minimal effect on slip resistance
- ▶ Eco-friendly
- ▶ 100% UV and fade resistant
- ▶ Single or 2 coat application



### Anti Graffiti Coating

An invisible, environmentally friendly, water based coating that will not crack yellow or fade. Mild graffiti can be washed off with a power washer, On heavier damage use a graffiti cleaner combined with hot power wash

Available in 2.5 & 5 litre containers, Covers approx. 10m<sup>2</sup> per coat per litre

- ▶ Cold wash possible
- ▶ Minimal chemicals required
- ▶ Eco-friendly
- ▶ Will not crack, flake or peel
- ▶ Excellent weather & UV resistance



## PREPARATION PRODUCTS

### Degreaser & Oil Remover

A proven, industrial strength degreasing solution that can be diluted with water depending on the strength needed. The water-based formula provides an economical, effective cleaner that removes grease, oil, adhesive, floor polish, transmission fluid, release agent and other foreign substances from concrete, masonry and many other surfaces..

Available in 1 litre and 5 litre containers. Dilutes up to 50:1 depending upon requirements [see label & Tech Data Sheet]



### NEW EcoAcid™

A water-based, non-corrosive concrete exfoliating cleanser. It is a safer, non-fuming alternative to harsh acids, that does not require neutralization. EcoAcid is environmentally friendly, non-toxic, non-hazardous and safely prepares most concrete surfaces by lightly washing and gently opening up the pores for effective staining with NewLook concrete stains or other penetrating coatings. Use on all newly cured concrete.

Available in 5 and 15 litre containers. Treats up to 30m<sup>2</sup> per litre



### NEW NANO Lithium - Densifier & Strengthener & dust binder for new & ageing concrete

A deep penetrating hardener / strengthener for concrete and terrazzo [polished concrete] Penetrates deeper, consolidate, hardens and binds dust. Significantly improves compressive strength & abrasion resistance.

Zero VOCs, non flammable, no odour and safe to use both indoors and outdoors

Treatment is permanent and protects against detergents, motor oil, de-icing and other chemicals and can be coloured with our NANO Colour – both available from our sister company [www.adsealcolours.co.uk](http://www.adsealcolours.co.uk)

Available in 5 litre & 20 litre containers. Double concentrated. Covers approximately 5 to 15 m<sup>2</sup> per dilute litre



### SolStrip

A cost effective and efficient solvent based stripper designed to remove solvent based acrylic sealers and coatings in preparation for recolouring or tinting. This heavy duty re-emulsifier is ideal for use on plain or imprinted [stamped] concrete, masonry and pavers. Available in 5 litre, 20 litre and 25 litre containers. Treats approximately 2 m<sup>2</sup> per litre but varies considerably depending upon condition of sealer being removed



## SUNDRY ITEMS

### AdGrip™ Low-Slip additive

A revolutionary low slip additive: a micronized polymer that's stirred into Adseal sealers and coatings for slip resistance & fine texturing. Use to increase traction on damp or sloped surfaces. Easily mixes into all Adseal™ sealers and other decorative coatings because of its low density aids suspension] low absorption and high resistance to solvents.

One tub is sufficient for one 15 – 25 ltr pail of resin. For two coat work use in top coat only



### Matting agent

A micronized polymer designed to be stirred into Adseal sealers to aid gloss reduction. It easily mixes into all Adseal™ sealers, most paints, & other decorative coatings because of its low absorption and high solvent resistance. Its low density allows a more consistent suspension in stains and sealers. One tub is sufficient for one 15 – 25 ltr pail of resin.



### Colour Charge

A quality pigment powder designed to be mixed in Adseal solvent based sealers. It's low density allows more consistent suspension. One tub is sufficient for one 25 litre pail of sealer BUT be warned start by adding a small amount and testing results – you can always add more but can't take it out.

Comes in Mahogany, Walnut, Brick Red, Charcoal Grey, Terracotta & Slate Green



### Algon Moss & Algae Remover

Almost a miracle product. Simply spray onto affected surface of the paving and leave. Takes a day or so to work but, in our experience, generally kills all and, what's more, stays on surface to keep killing new infestations for a month or three.

Available in 2.5 litre containers. Dilutes up to 1:3 so covers a huge area



### NEW Green Klean™

The eco-friendly, alternative to harsh cleaning acids or hazardous etching chemicals. The advanced liquid formula dissolves and physically breaks down mortar & concrete by attacking the Portland Cement and other unique chemical components, reducing it to a soft paste that's easy to clean and remove from the surface. Use GREEN KLEAN to safely clean, dissolve and remove concrete, cured cement, mortar, grout etc.. Use to clean concrete splash, trowels, screeds, hand tools, mixers, pumps, scaffolds, spot boards, trucks, trailers and silos, generators, augers and more!

Available in 5 and 15 litre containers



### SolStrip

A cost effective and efficient solvent based stripper designed to remove solvent based acrylic sealers and coatings in preparation for recolouring or tinting. This heavy duty re-emulsifier is ideal for use on plain or imprinted [stamped] concrete, masonry and pavers. Available in 5 litre, 20 litre and 25 litre containers. Treats approximately 2 m<sup>2</sup> per litre but varies considerably depending upon condition of sealer being removed



### NEW Efflock – efflorescence-curing preventer and remover

**Powder admixture** – an efflorescence-curing *nano fusion* additive for cement mixtures. Guaranteed to stop primary & secondary efflorescence. Use for masonry, blocks, mortar, precast or insitu concrete, render, etc.

**Liquid admixture** – easier to mix than powder – mix into batch water

Other benefits of admixture – Improves density & cure strength, enhances concrete uniformity & stabilizes integral colour

**Efflorescence remover** - A fast acting water based cleaner to attack efflorescence and make it easy to clean from existing concrete & masonry

**Topical treatment** – for existing concrete & masonry surfaces. Uses same *nano fusion* chemistry as admixtures it penetrate deep to bind sodium & help prevent further efflorescence. May need repeat treatment.

